

# \$389,900 - 303, 65 Belvedere Point Se, Calgary

MLS® #A2213629

**\$389,900**

2 Bedroom, 3.00 Bathroom, 1,286 sqft  
Residential on 0.02 Acres

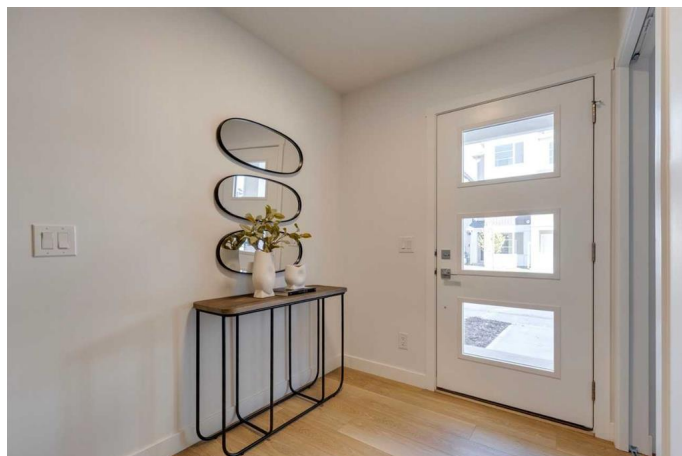
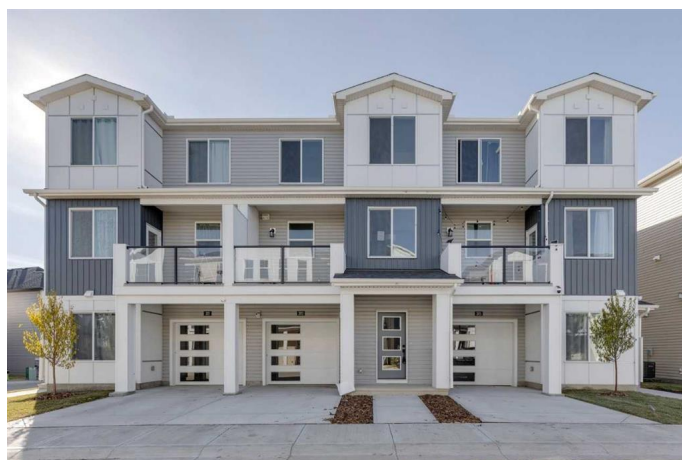
Belvedere., Calgary, Alberta

Welcome to Belvedere Rise. This brand new, attached garage home with driveway offers parking for two vehicles. Built by Minto Communities, one of Canada's largest homebuilders with over 70 years of experience. Situated just a short walk away from East Hills Shopping Centre, enjoy the fresh air as you stroll along new pedestrian pathways to access everyday amenities like Costco, Walmart, banks, and more—all just across the street. - Steps to Bus Rapid Transit (BRT) - Stoney Trail (Calgary's ring road/perimeter hwy) - 7 mins to Chestermere Lake for outdoor activities - 15 mins to Downtown Calgary - 20 mins to the Calgary International Airport - 20 mins to the South Health Campus (1.3 million sq.ft. facility) - 45 mins to Kananaskis & 1.5 hours to Banff. Photos are representative.

Built in 2025

## Essential Information

MLS® #	A2213629
Price	\$389,900
Bedrooms	2
Bathrooms	3.00
Full Baths	2
Half Baths	1
Square Footage	1,286
Acres	0.02



Year Built	2025
Type	Residential
Sub-Type	Row/Townhouse
Style	3 Storey
Status	Active

### **Community Information**

Address	303, 65 Belvedere Point Se
Subdivision	Belvedere.
City	Calgary
County	Calgary
Province	Alberta
Postal Code	T2A7Y9

### **Amenities**

Amenities	None
Parking Spaces	2
Parking	Single Garage Attached
# of Garages	1

### **Interior**

Interior Features	Kitchen Island, Open Floorplan, Stone Counters
Appliances	Dishwasher, Dryer, Microwave Hood Fan, Range Hood, Refrigerator, Washer, Electric Range
Heating	Forced Air, Natural Gas
Cooling	None, Rough-In
Basement	None

### **Exterior**

Exterior Features	Balcony, Lighting, Private Entrance
Lot Description	Landscaped, Low Maintenance Landscape, Street Lighting
Roof	Asphalt Shingle
Construction	Vinyl Siding, Wood Frame
Foundation	Poured Concrete

### **Additional Information**

Date Listed	April 21st, 2025
Days on Market	189
Zoning	R-2M

## Listing Details

Listing Office            Bode Platform Inc.

Data is supplied by Pillar 9â,,ç MLSÂ® System. Pillar 9â,,ç is the owner of the copyright in its MLSÂ® System. Data is deemed reliable but is not guaranteed accurate by Pillar 9â,,ç. The trademarks MLSÂ®, Multiple Listing ServiceÂ® and the associated logos are owned by The Canadian Real Estate Association (CREA) and identify the quality of services provided by real estate professionals who are members of CREA. Used under license.