

\$699,000 - 23 Copperleaf Crescent Se, Calgary

MLS® #A2227588

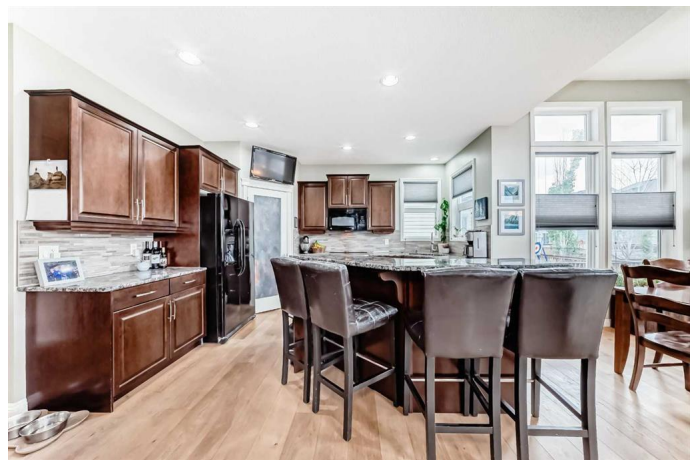
\$699,000

4 Bedroom, 4.00 Bathroom, 1,931 sqft

Residential on 0.10 Acres

Copperfield, Calgary, Alberta

Pride of ownership exudes from this stunning 2-storey "Jayman Built" home located in the highly sought after community of Copperfield. This home offers 4 bedrooms, 3.5 baths plus a fully finished basement and a double attached garage. The main level consists of an open plan with 9' ceilings, hardwood floors and large windows that bright in tons of natural sunlight. The kitchen is a chefs delight with upgraded S/S appliances, custom cabinets, granite counter-tops, tiled backsplashes, a corner pantry plus a huge center island/breakfast bar that overlooks the large living room with a cozy gas fireplace. Completing the main floor is a 2pc bath, laundry area plus a separate dining room featuring 11' ceilings and access to a huge South facing back deck with a gas BBQ hook-up. Upstairs you will find a large primary bedroom with a walk-in closet and luxurious 5pc ensuite with dual vanities, soaker tub and glass shower. Two additional bedrooms a full bath and massive bonus room complete the upper level. The basement was professionally developed with all permits pulled featuring a good sized family room, 4th bedroom, 3pc bath and flex area perfect for an office or gym. Additional bonuses include: Central A/C, a newer furnace, hot water tank plus a double attached garage with an extra wide driveway that will accommodate 3 vehicles. The exterior is fully fenced/landscaped offering you your own private retreat. Located close to schools, parks, City transit, major shopping/restaurants off 130ave and easy access to main



roadways. This home is must see to appreciate.

Built in 2006

Essential Information

MLS® #	A2227588
Price	\$699,000
Bedrooms	4
Bathrooms	4.00
Full Baths	3
Half Baths	1
Square Footage	1,931
Acres	0.10
Year Built	2006
Type	Residential
Sub-Type	Detached
Style	2 Storey
Status	Active

Community Information

Address	23 Copperleaf Crescent Se
Subdivision	Copperfield
City	Calgary
County	Calgary
Province	Alberta
Postal Code	T2Z 0B9

Amenities

Parking Spaces	5
Parking	Double Garage Attached, Driveway, Insulated
# of Garages	2

Interior

Interior Features	Breakfast Bar, Built-in Features, Double Vanity, Granite Counters, High Ceilings, Kitchen Island, No Smoking Home, Open Floorplan, Walk-In Closet(s)
Appliances	Central Air Conditioner, Dishwasher, Dryer, Electric Stove, Garage Control(s), Microwave Hood Fan, Refrigerator, Washer, Window

	Coverings
Heating	High Efficiency, Forced Air, Natural Gas
Cooling	Central Air
Fireplace	Yes
# of Fireplaces	1
Fireplaces	Gas, Living Room, Tile, Mantle
Has Basement	Yes
Basement	Finished, Full

Exterior

Exterior Features	Fire Pit, Garden, Private Yard
Lot Description	Back Yard, Few Trees, Landscaped, Rectangular Lot, Street Lighting
Roof	Asphalt Shingle
Construction	Brick, Vinyl Siding, Wood Frame
Foundation	Poured Concrete

Additional Information

Date Listed	June 5th, 2025
Days on Market	9
Zoning	R-G

Listing Details

Listing Office	2% Realty
----------------	-----------

Data is supplied by Pillar 9â„¢ MLS® System. Pillar 9â„¢ is the owner of the copyright in its MLS® System. Data is deemed reliable but is not guaranteed accurate by Pillar 9â„¢. The trademarks MLS®, Multiple Listing Service® and the associated logos are owned by The Canadian Real Estate Association (CREA) and identify the quality of services provided by real estate professionals who are members of CREA. Used under license.