

# \$598,800 - 1512 Robson Crescent Se, Calgary

MLS® #A2238076

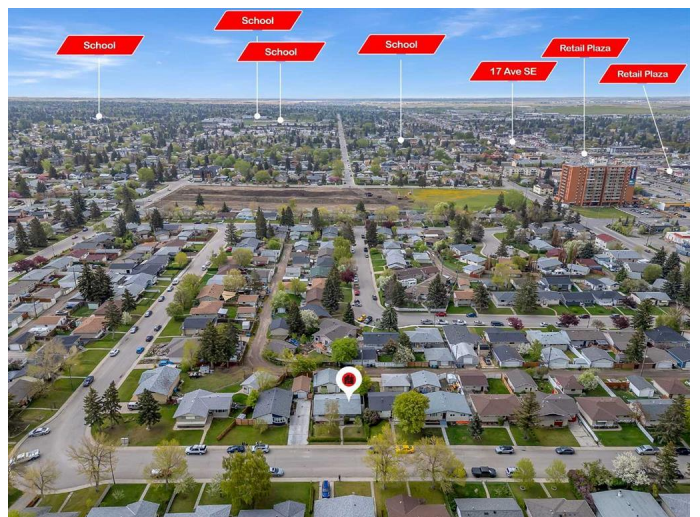
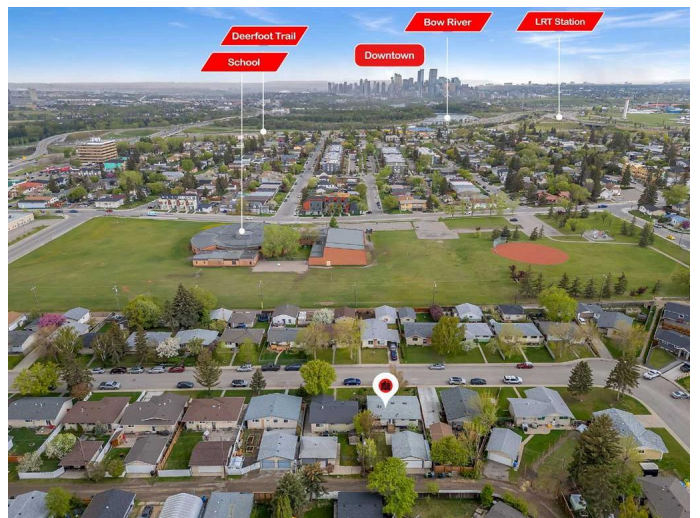
**\$598,800**

5 Bedroom, 2.00 Bathroom, 1,040 sqft  
Residential on 0.11 Acres

Albert Park/Radisson Heights, Calgary, Alberta

FULLY RENOVATED!! OVERSIZED HEATED DOUBLE DETACHED GARAGE!! SEPARATE ENTRANCE ILLEGAL SUITE BASEMENT!! 5 BED 2 BATH!! LAUNDRY ON BOTH THE LEVELS!! OVER 1900+ SQFT OF LIVING SPACE!! This beautifully updated bungalow in Albert Park/Radisson Heights is packed with features that make everyday living easy and comfortable. The main level features an open-concept layout with a bright living area, updated kitchen with sleek stainless steel appliances and a dining space that leads right out to the backyardâ€”perfect for summer BBQs. You'll also find three bedrooms, a modern 4PC bath and convenient laundry on the main floor (no hauling baskets up and down!). Downstairs, a separate entrance leads to an illegal suite featuring a spacious Rec room, a kitchen, two additional bedrooms, a 3PC bath, laundry and plenty of storage. Out back, you'll love the oversized heated double garageâ€”great for parking. This location is hard to beat: you're just minutes from downtown, close to CTrain access, schools, parks, and shopping. Albert Park/Radisson Heights is a well-established community known for its quick commute, mature trees and city skyline views. WHETHER YOU'RE LOOKING TO LIVE IN, RENT OUT OR BOTHâ€”THIS ONE CHECKS A LOT OF BOXES.

Built in 1965



## Essential Information

|                |             |
|----------------|-------------|
| MLS® #         | A2238076    |
| Price          | \$598,800   |
| Bedrooms       | 5           |
| Bathrooms      | 2.00        |
| Full Baths     | 2           |
| Square Footage | 1,040       |
| Acres          | 0.11        |
| Year Built     | 1965        |
| Type           | Residential |
| Sub-Type       | Detached    |
| Style          | Bungalow    |
| Status         | Active      |

## Community Information

|             |                              |
|-------------|------------------------------|
| Address     | 1512 Robson Crescent Se      |
| Subdivision | Albert Park/Radisson Heights |
| City        | Calgary                      |
| County      | Calgary                      |
| Province    | Alberta                      |
| Postal Code | T2A 1Y7                      |

## Amenities

|                |  |
|----------------|--|
| Parking Spaces | 2  |
| Parking        | Double Garage Detached, Heated Garage, Oversized |
| # of Garages   | 2  |

## Interior

|                   |  |
|-------------------|--|
| Interior Features | Open Floorplan, Separate Entrance, Master Downstairs |
| Appliances        | Other  |
| Heating           | Forced Air, Natural Gas                              |
| Cooling           | None   |
| Has Basement      | Yes  |
| Basement          | Exterior Entry, Finished, Full, Suite                |

## Exterior

|                   |                 |
|-------------------|-----------------|
| Exterior Features | Other           |
| Lot Description   | Back Yard       |
| Roof              | Asphalt Shingle |

|              |                                  |
|--------------|----------------------------------|
| Construction | Stucco, Vinyl Siding, Wood Frame |
| Foundation   | Poured Concrete                  |

**Additional Information**

|                |                |
|----------------|----------------|
| Date Listed    | July 8th, 2025 |
| Days on Market | 20             |
| Zoning         | R-CG           |

**Listing Details**

|                |             |
|----------------|-------------|
| Listing Office | Real Broker |
|----------------|-------------|

Data is supplied by Pillar 9â„¢ MLS® System. Pillar 9â„¢ is the owner of the copyright in its MLS® System. Data is deemed reliable but is not guaranteed accurate by Pillar 9â„¢. The trademarks MLS®, Multiple Listing Service® and the associated logos are owned by The Canadian Real Estate Association (CREA) and identify the quality of services provided by real estate professionals who are members of CREA. Used under license.